

BULLETIN

published 08.03.2022

ORGANIZERS

The competition is organised by orienteering club Ilves.

Event Director [spring]:
Margus Sarap,
margus(ät)okilves.ee

Event Director
[autumn]: Sven Oras,
sven(ät)okilves.ee

Event Secretary:
Helen Maria Tamm,
ilvesgp(ät)okilves.ee

Event Website:
[https://www.okilves.ee/
voist/ilvesgp/2022/](https://www.okilves.ee/voist/ilvesgp/2022/)



ILVES GP 2022

Spring Stage: April 30 – May 1, 2022

Päidlapalu

Autumn Stage: September 03 – 04, 2022

Soontaga

LOCATION OF THE STAGES ON A MAP: [LINK](#)



TERRAIN DESCRIPTIONS

Päidlapalu

The Päidlapalu landscape is mostly state forest. It is predominantly spruce and mixed forest. There are many clearings and young stands of different ages. The runnability of the forest ranges from good to very poor. The relief is varied. There is a large valley with slope formations and an upland mire with swamps of varying sizes. Difference in altitude is 55 m and 30 m on one slope. Moderate number of roads and tracks, no target network. Woodland coverage 90%. The eastern part of the landscape is more rugged along the shores of Lake Mõrtsuka.

COMPETITION CLASSES

M8NR	N8NR
M10NR	N10NR
M12	N12
M14	N14
M16	N16
M18	N18
M20	N20
M21E	N21E
M21A	N21A
M21B	N21B
M35	N35
M40	N40
M45	N45
M50	N50
M55	N55
M60	N60
M65	N65
M70	N70
M75	N75
M80	N80
M85	N85

M – Men

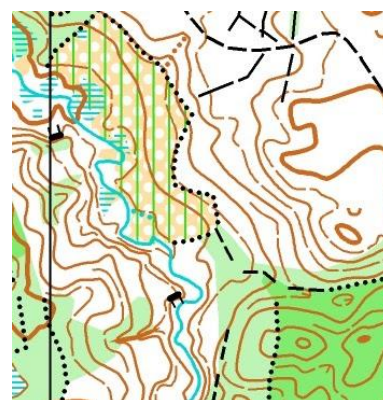
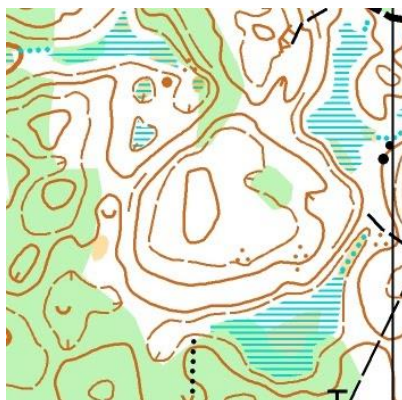
N – Women

NR – marked course for children

MN 21E – long and difficult

MN 21A – short and difficult

MN 21B – short and easy



Soontaga

The Soontaga landscape is a slope on the eastern bank of the Väike-Emajõgi valley, predominantly state forest. Dominated by pine trees. There are coppices and young stands of different ages. Runnability ranges from very good to poor.

The slopes of the river valley are relatively gentle and the relief is mostly flat, with isolated nests of lesser spotted knapweed. There are small swamps, but also some larger marshes. Difference in altitude between the terrain and one slope is 30 m. Forest coverage 99%.



PROGRAM

SPRING:

1st stage 30.04 Shortened Long Distance - mass start
2nd stage 01.05 Middle Distance - individual start

AUTUMN:

3rd stage 03.09 Long Distance - Individual start
4th stage 04.09 Pursuit - Chasing start

ENTRIES

The runners must register their entries using the platform Osport.ee. Registration will open in March. The registration deadline for spring stages is 25.04.2022. The registration deadline for autumn stages is 29.08.2022.

MN 8, 10, 12, 14, 16, 18	5 EUR / day
MN 20, 60, 65, 70, 75, 80, 85	10 EUR / day
MN 21E, 21A, 21B, 35, 40, 45, 50, 55	15 EUR / day
Open course (No pre-registration)	10 EUR / day

Entering all 4 stages, a -15% discount applies.

SCOREKEEPING AND AWARDING

The winner of the Ilves GP 2022 will be determined by the sum of the 4 stage times. The overall winners will be awarded at the 4th stage. In addition, the winners of each stage will be awarded separately.

ELECTRONIC PUNCHING SYSTEM

The SPORTIdent (SI) marking system is used in all classes. SI-cards can be rented from the organisers.

ORGANIZERS

The competition is organised by orienteering club Ilves.

Event Director:

- Spring Stages 1 and 2: Margus Sarap, margus(ätt)okilves.ee, 53 038 088
- Autumn Stages 3 and 4: Sven Oras, sven(ätt)okilves.ee, 53 420 820

Event Secretary:

- Helen Maria Tamm, ilvesgp(ätt)okilves.ee

The next information on the Spring Stages 1 and 2 will be available on 1 April. Information about the Spring Stages will be available 2 days before the competition. The next information about the Autumn Stages 3 and 4 will be available on 1 August. Information about the Autumn Stages will be available 2 days before the competition.